

# BÛSELİKAŞİRAN PEŞREV

Devr-i Kebîr

Neyzen Emin Dede

28

TESLİM

TESLİM

İkinci Hane

TESLİM

### Üçüncü Hane



Musical notation for Üçüncü Hane, consisting of three staves. The first staff begins with a treble clef, a key signature of one sharp (F#), and a common time signature (C). The melody starts with a quarter note G4, followed by a quarter note A4, and then a series of eighth notes. The second staff continues the melody with a series of eighth notes and a quarter note. The third staff concludes the piece with a quarter note G4, a quarter note F#4, and a final quarter note G4, marked with a double bar line and a fermata symbol.

### Dördüncü Hane



Musical notation for Dördüncü Hane, consisting of three staves. The first staff begins with a treble clef, a key signature of one sharp (F#), and a common time signature (C). The melody starts with a quarter note G4, followed by a quarter note A4, and then a series of eighth notes. The second staff continues the melody with a series of eighth notes and a quarter note. The third staff concludes the piece with a quarter note G4, a quarter note F#4, and a final quarter note G4, marked with a double bar line and a fermata symbol.

# BÛSELİKAŞİRAN MEVLEVÎ ÂYİN-İ ŞERİF'İ

Devr-i Revan

Ahmed Avni Konuk

MEN A ŞI KI AŞ KI O ŞÜ DE A

ŞI KI MEN HEY Yİ YAR CA NI MEN CA NA NI MEN

TE Nİ A ŞI KI CAN A ME DE CAN A

ŞI KI TEN HEY Yİ YAR CA NI MEN CA NA NI MEN

GE Hİ MEN A REM DÜ DES Tİ DER GER

DE Nİ O HEY Yİ YAR CA NI MEN CA NA NI MEN

GE Hİ O KE ŞE DEM ÇÜ DİL RÜ BA YAN

GER DEN HEY Yİ YAR CA NI MEN CA NA NI MEN

EY CEB RE İL EZ A SÜ MAN

EZ AŞ KI TÛ PA KÛF TE

VEY EN CÛ Mİ ÇER Hİ FE LEK



EN DER HE VA PA KÛF TE



EN DER HA RA BA Tİ FE NA



ŞA HEN ŞE HA NI MUH TE ŞEM



HEM Bİ KÛ LEH SER VER ŞÛ DE



HEM Bİ KA BA PA KÛF TE



ES HA Bİ KİB RÛ NEF Sİ KEY



BA ŞEN Dİ LÂ YI KI ŞA Hİ RA



EZ İZ ZE Tİ İN ŞA Hİ MA



SAD KİB Rİ YA PA KÛF TE



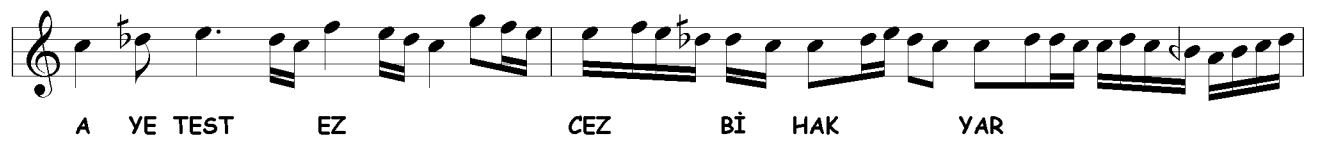
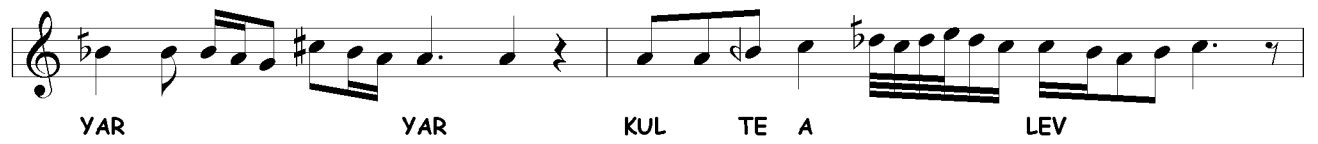
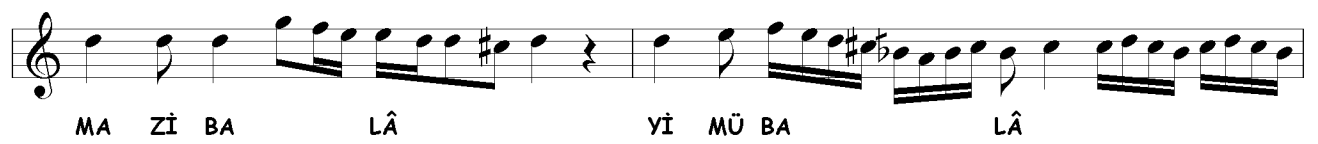
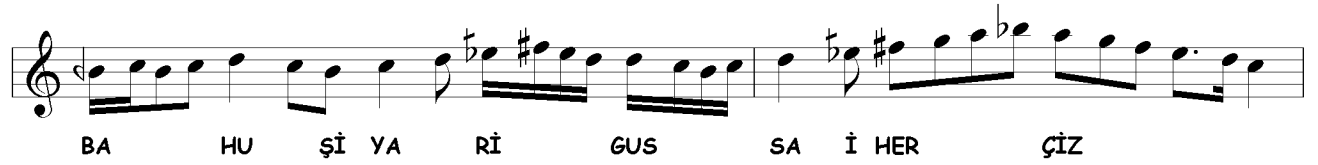
HEY YA Rİ MEN HEY Mİ Rİ MEN



AH Pİ Rİ MEN CA NA NI MEN



A ŞİK HE ME SÂL MES TÛ RÛS VA



YAR MA Zİ CEZ Bİ HAK TE A  
LÂ Mİ RE VİM YAR YAR

## İKİNCİ SELÂM

### Evfer

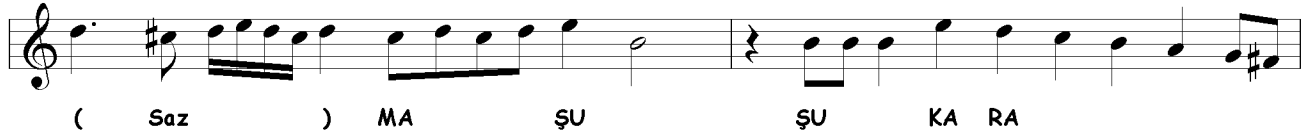
AH EY MUT MUT RI BAN  
BAN EY MUT MUT RI BAN  
BAN KÛ AN AN SE MA  
( Saz ) İ CAN CAN FE ZA  
AH EY SA SA KI YAN  
YAN EY SA SA KI YAN  
YAN KÛ AN A AN ŞE RA  
( Saz ) Bİ GAM GAM Zİ DA



AH EY A A ŞI KAN



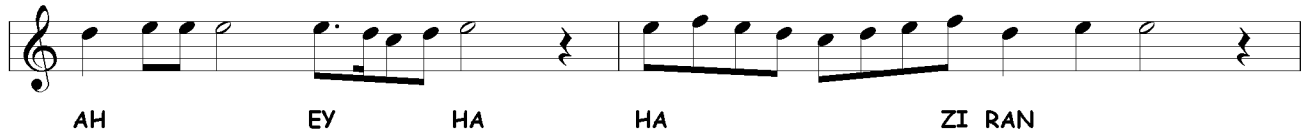
KAN EY A A A ŞI KAN



( Saz ) MA ŞU ŞU KA RA



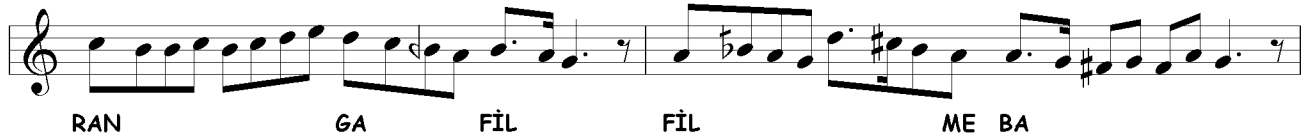
RA DER BER KE ŞİD



AH EY HA HA ZI RAN



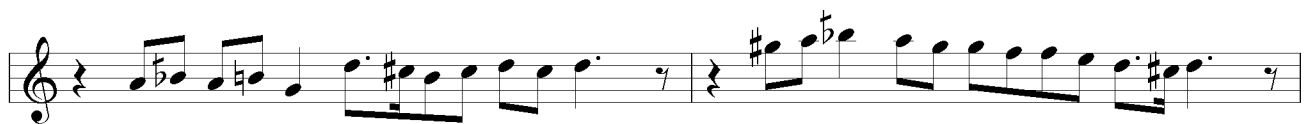
RAN EY HA HA ZI RA

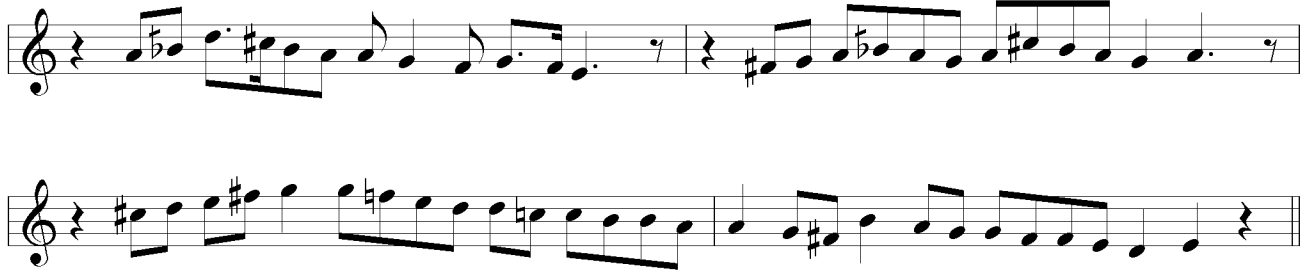


RAN GA FİL FİL ME BA



( Saz ) ŞİD EZ EZ HU DA





## ÜÇÜNCÜ SELÂM

### Devr-i Kebîr

MA BE HAR MEN GÂ Hİ CAN BAZ

A ME DİM BE Lİ YA Rİ MEN

CA Nİ Bİ ŞEH HEM ÇÜ ŞEH BAZ

A ME DİM BE Lİ YA Rİ MEN

VA RE Hİ DİM EZ GE DA Yİ

VÜ Nİ YAZ BE Lİ YA Rİ MEN

PA Yİ KÛ BAN CA Nİ Bİ NAZ

A ME DİM BE Lİ YA Rİ MEN





EY Kİ HE ZAR A FE RİN BU Nİ CE SUL  
HER Kİ BU GÜN VE LE DE İ NA NU BEN



TAN O LUR KU LI O LAN Kİ Şİ LER  
YÜZ SÜ RE YOK SUL İ SE BAY O LUR



CA NIM HUS RE VÜ HA KAN O LUR  
CA NIM BAY İ SE SUL TAN O LUR



YAR HUS RE VÜ HA KAN O LUR  
YAR BAY İ SE SUL TAN O LUR



Pİ Rİ ME NÜ MÜ Rİ Dİ MEN DER Dİ ME NÜ DE VA YI MEN



YAR YAR FA Şİ Bİ GÜF TEM İN SU HEN



ŞEM Sİ ME NÜ HU DA Yİ MEN YAR YAR



EZ DE Rİ MIS RI TA BE ÇİN GÜF TE VÜ HA YÜ HU Yİ MEN



YAR YAR GÜF TE İ ŞEM Sİ DİN Bİ HAN



ŞEM Sİ ME NÜ HU DA Yİ MEN YAR YAR



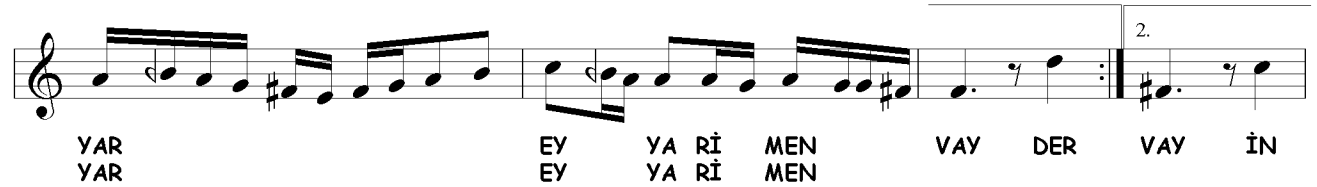
HER



RU Zİ BE NEV BE RA YED İN DİL BE Rİ AŞK AŞK AŞK



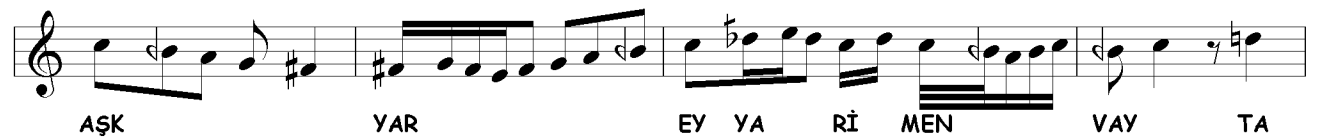
GER DE Nİ MA DE REF KE NED DEF TE Rİ AŞK AŞK



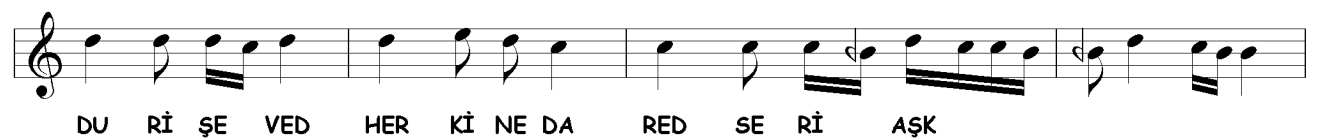
YAR YAR EY YA Rİ MEN VAY DER VAY İN EY YA Rİ MEN



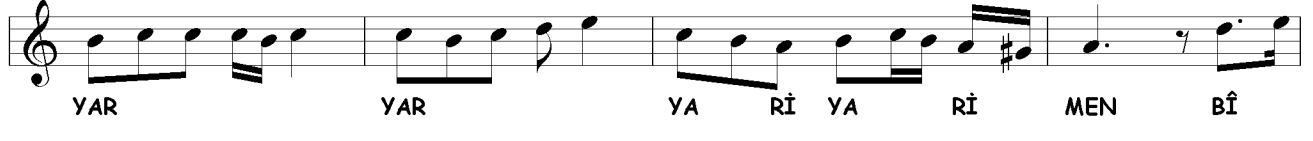
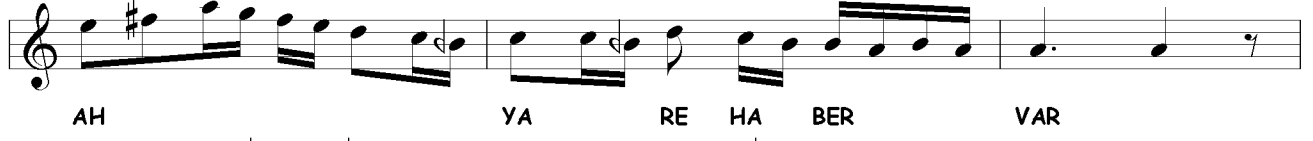
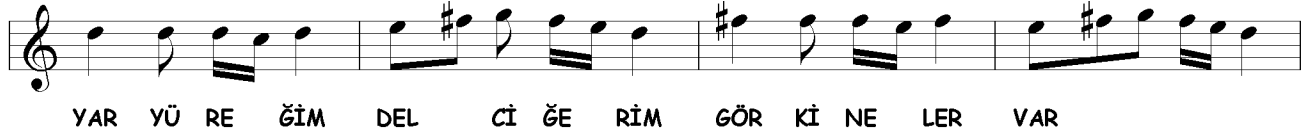
HA Rİ E ZAN Nİ HA Dİ HAK BER DER Dİ AŞK



AŞK YAR EY YA Rİ MEN VAY TA



DU Rİ ŞE VED HER Kİ NE DA RED SE Rİ AŞK



ÇA RE LE RE MU İN O LAN MEV LA NA  
YAR YAR YA Rİ YA Rİ

## DÖRDÜNCÜ SELÂM

Evfer

MEN EY A A ŞI KAN  
KAN EY A A ŞI KAN  
KAN A MED GE Hİ VAS  
( Saz ) LÜ LÜ Lİ KA  
AH A MED MED Nİ DA  
DA EZ A A SÜ MAN  
MAN KEY MA MA Hİ RU  
( Saz ) YAN ES ES SA LÂ

## SON PEŞREV

Düyek

Musical score for SON PEŞREV, Düyek. The score consists of six staves of music in 2/4 time, key of D major. The melody is written in a single voice on a treble clef staff. The music features a mix of eighth and sixteenth notes, with some rests and accidentals. The piece concludes with a double bar line and a final cadence.

## SON YÜRÜK

Yürük Semâî

Musical score for SON YÜRÜK, Yürük Semâî. The score consists of three staves of music in 2/4 time, key of D major. The melody is written in a single voice on a treble clef staff. The music features a mix of eighth and sixteenth notes, with some rests and accidentals. The piece concludes with a double bar line and a final cadence.