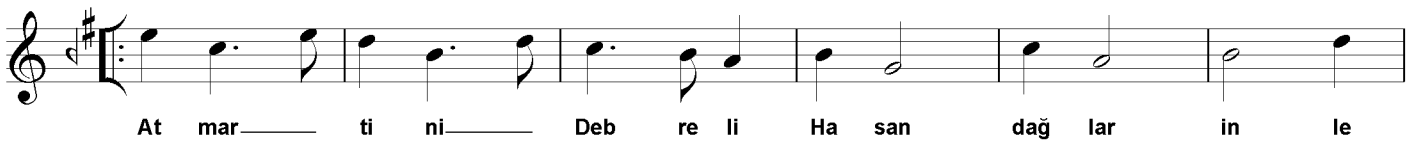
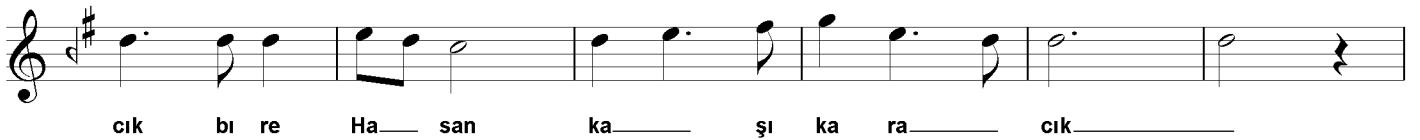
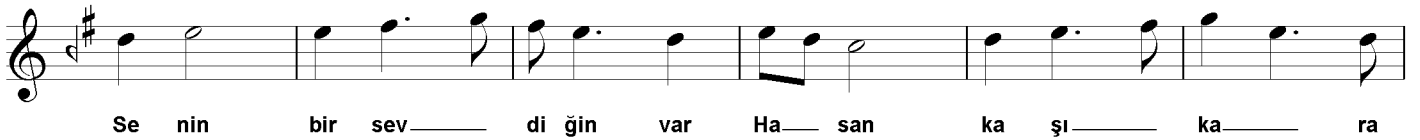
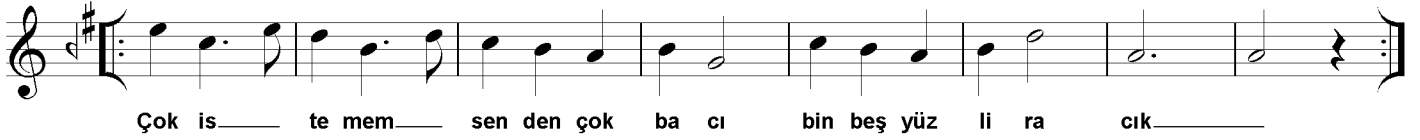
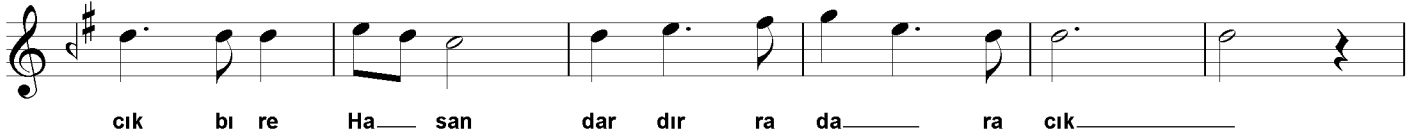
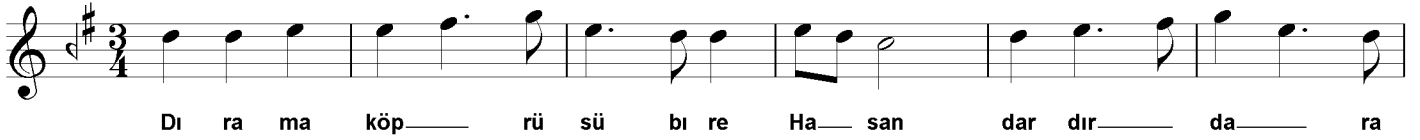


Hüseyinî Rumeli Türküsü

Dirama köprüsü bre Hasan dardır geçilmez

Semâî ♩ = 148

Anonim



*Dirama köprüsü bre Hasan dardır daracık bre Hasan
Çok istemem senden çok bacı bin beşyüz liracık
Senin bir sevdiğin var Hasan kaşı karacık bre Hasan
At martini Debreli Hasan dağlar inlesin
Dirama mahpushanesin Hasan şanın söylesin*