

# SEGÂH PEŞREV

Devr-i Kebîr

Neyzen Yusuf Paşa

28

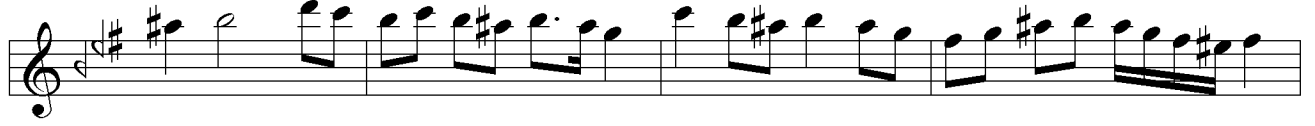
TESLİM

2.Haneye 3.Haneye 4.Haneye K A R A R

İkinci Hane



Üçüncü Hane



Dördüncü Hane



# MÜSTEAR MEVLEVÎ ÂYÎN-I ŞERÎF'İ

## BİRİNCİ SELÂM

Devr-i revân

Hâfız Ahmet Irsoy



A TEŞ NE ZE NED DER Dİ Lİ MA



İL LA HU YA Rİ HEY HÜN KÂ RI MEN



KÛ TEH NE KÛ NED MEN Zİ Lİ MA



İL LÂ HU YA Rİ HEY HÜN KÂ RI MEN



GER A LE Mİ YAN CÛM LE TA Bİ



BAN BA ŞEND YA Rİ HEY HÜN KÂ RI MEN



HAL Lİ NE KÛ NED MÜŞ Kİ Lİ MA



İL LA HU YA Rİ HEY HÜN KÂ RI MEN



HEY Yİ HEY YA Rİ MEN HEY Yİ HEY Mİ Rİ MEN



YAR YAR YAR YÜ RE ĞİM YAR



YAR YÜ RE ĞİM DEL Cİ ĞE RİM GÖR Kİ NE LER VAR ( SAZ )



İM RUZ HAN DA Nİ MÜ HOŞ



KÂN BAH Tİ HAN DAN Mİ RE SED ( SAZ )



SUL TA Nİ SUL TA NA Nİ MA



EZ SU Yİ MEY DAN Mİ RE SED



İK BAL A BA DAN ŞÜ DE ( SAZ )



DES TA RI DİL Vİ RAN ŞÜ DE



PÜR SA NÜ CU YAN Mİ RE VEM



AN SU Kİ SUL TAN Mİ RE SED



PÜR NUR ŞEV ÇÜN A SÜ MAN



SER SEB Zİ ŞEV ÇÜN BOS TAN



## İKİNCİ SELÂM

### Evfer

VAY SUL TA NI ME Nİ  
( Saz ) SUL TA NI ME Nİ  
AH EN DER Dİ LÜ CAN  
CAN İ MA NI ME Nİ  
AH DER MEN Bİ DE Mİ  
( Saz ) MEN ZİN DE ŞE VEM  
AH YEK CAN Çİ ŞE VED  
VED SAD CA NI ME Nİ  
AH İ MA NI ME Nİ



## ÜÇÜNCÜ SELÂM

Evsat

DER ME YA NI PER DE İ HUN

AŞ KI RA GÜL ZA Rİ HA

A ŞI KAN RA BA CE MA Lİ

AŞ KI Bİ ÇÜN KÂ Rİ HA

ŞEM Sİ TEB Rİ Zİ TÜ Yİ HUR

Şİ Dİ EN DER EB Rİ HARF

ÇÜN BE RA MED A Fİ TA BET

MAH Vİ ŞÜD GÜF TA Rİ HA



EY Kİ HE ZAR A FE RİN YA Rİ YAR BU Nİ CE SUL  
HER Kİ BU GÜN VE LE DE YA Rİ YAR İ NA NU BEN



TAN O LUR AH KU LI O LAN Kİ Şİ LER  
YÜZ SÜ RE AH YOK SUL İ SE BAY O LUR



CA NIM HUS RE VÜ HA KAN O LUR  
CA NIM BAY İ SE SUL TAN O LUR



DOST HUS RE VÜ HA KAN O LUR  
DOST BAY İ SE SUL TAN O LUR



EZ EV VE Lİ İM RU Zİ HA Rİ FA Nİ HA RA BAT



MİH MA Nİ TÜ END EY ŞE HÜ SUL TA Nİ HA RA BAT





İM RUZ Çİ RU ZES Tİ Bİ GÛ RU Zİ SA A DET



VİN KIB LE İ DİL KİST Bİ GÛ CA Nİ HA RA BAT YA Rİ MEN



YAR AH YA Rİ MEN YAR YAR \_ YAR \_ \_ \_



YAR YA Rİ MEN VAY YAR YA Rİ MEN YA Rİ ME RA AH YA Rİ MEN



YA Rİ ME RA DOST YA Rİ MEN YA Rİ ME RA AH YA Rİ MEN VAY



BAN Gİ BE RA MED Zİ Dİ LÛ CA Nİ MEN KÂ Hİ Zİ MA



ŞU KA İ PİN HA Nİ MEN GÛF TE MÛ KUR BA Nİ Kİ YEM



YAR GÛFT A Nİ ME Nİ A Nİ ME Nİ A Nİ MEN



DAD Dİ Hİ SA GA RU PEY MA NE RA MA YE Dİ Hİ MEC Lİ SÜ MEY



HA NE RA MES Tİ KÜ Nİ NER Kİ Sİ MAH MUR RA Pİ Şİ KE Şİ



AN BÜ Tİ DÜR DA NE RA YA Rİ A MED



BE SUL Hİ EY AH BAB MA LE KÜM KA İ Dİ NE İN DEL



BAB MA LE KÜM KA İ Dİ NE İN DEL BAB



NEV BE Tİ HİC RÜ İN Tİ ZAR GÜ ZEŞT



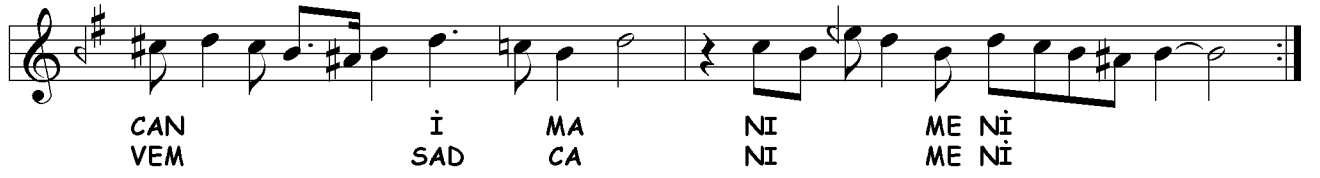
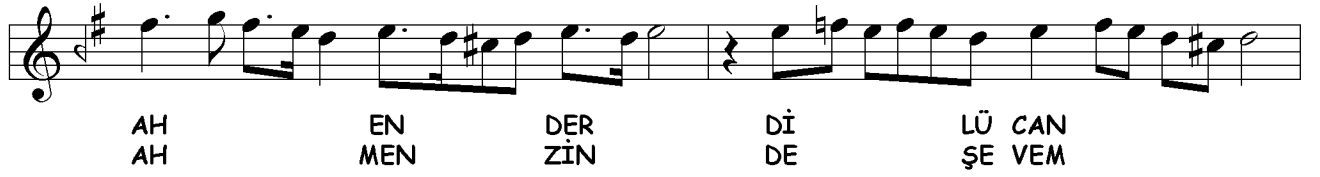
FED HU LÜD DA RE YA Ü LİL EL BAB



FED HU LÜD DA RE YA Ü LİL EL BAB

## DÖRDÜNCÜ SELÂM

Evfer



## SON PEŞREV

( Segâh Karabatak Peşrev )

Düyek

Hızır Ağa

Musical score for SON PEŞREV, Düyek section, Hızır Ağa. The score consists of six staves of music in 2/4 time, key of D major. The first staff begins with a treble clef, a key signature of one sharp (F#), and a 2/4 time signature. The music is written in a single melodic line with various rhythmic patterns and ornaments. The piece concludes with a double bar line and a final cadence.

## SON YÜRÜK

Yürük Semâî

Musical score for SON YÜRÜK, Yürük Semâî section. The score consists of five staves of music in 2/4 time, key of D major. The first staff begins with a treble clef, a key signature of one sharp (F#), and a 2/4 time signature. The music is written in a single melodic line with various rhythmic patterns and ornaments. The piece concludes with a double bar line and a final cadence.

The image displays a musical score for a single melodic line, likely for a ney, in G major (one sharp) and 5/8 time. The score is written across five staves. The first staff begins with a treble clef, a key signature of one sharp (F#), and a 5/8 time signature. The melody consists of eighth and quarter notes, with some beamed eighth notes. The second staff continues the melody, featuring a quarter rest in the second measure. The third staff shows a continuation with eighth notes and quarter notes. The fourth staff features a more rhythmic pattern with beamed eighth notes. The fifth and final staff concludes the piece with a double bar line.