

# HİCAZ PEŞREV

Devr-i Kebîr

Aziz Dede

The first part of the Hicaz Peşrev is written in 2/4 time with a key signature of one sharp (F#). It consists of four staves of music. The first staff begins with a treble clef, a key signature of one sharp, and a time signature of 2/4. The music features a mix of eighth and sixteenth notes, with some rests and a final quarter note. The second and third staves continue the melodic line with similar rhythmic patterns. The fourth staff concludes the section with a final quarter note and a fermata.

§ TESLİM

The second part of the Hicaz Peşrev is marked with a section symbol (§) and the word 'TESLİM'. It consists of four staves of music in 2/4 time with a key signature of one sharp (F#). The notation is more complex, featuring many sixteenth and thirty-second notes, creating a dense melodic texture. The first staff starts with a treble clef, one sharp, and 2/4 time. The music flows through the four staves with various rhythmic patterns and melodic lines, ending with a final quarter note and a fermata.

İkinci Hane

The third part of the Hicaz Peşrev is labeled 'İkinci Hane' and consists of two staves of music in 2/4 time with a key signature of one sharp (F#). The notation continues the melodic and rhythmic patterns from the previous sections, featuring a mix of eighth and sixteenth notes. The first staff begins with a treble clef, one sharp, and 2/4 time. The second staff concludes the section with a final quarter note and a fermata.



Üçüncü Hane



Dördüncü Hane



# HICAZ MEVLEVÎ ÂYÎN-İ ŞERÎF'İ

## BİRİNCİ SELÂM

Devr-i Revân

Abdürrahim Künhî Dede



MEN A ŞI KI AN HÜS NEM AŞ KES Tİ MÜ NA CA



TEM HEY Yİ YA Rİ HEY SUL TA NI MEN



VAY ( Saz ) EZ SAV MA A Bİ RU NEM DER KÛ



Yİ HA RA BA TEM HEY Yİ YAR HEY SUL



TA NI MEN VAY ( Saz ) YA Rİ YAR MEN BEN



DE İ SUL TA NEM SUL TA NI Cİ HAN BA NEM



HEY Yİ YA Rİ HEY SUL TA NI MEN VAY



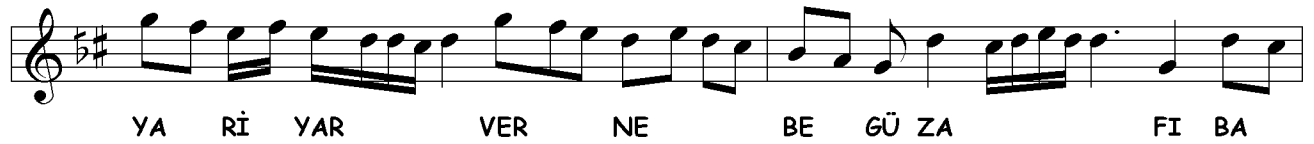
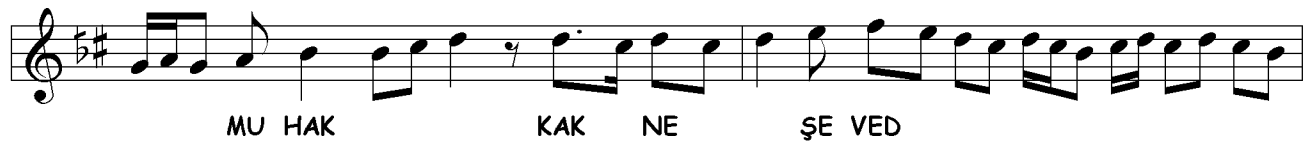
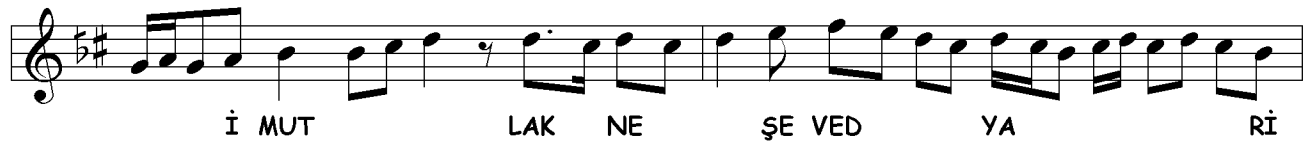
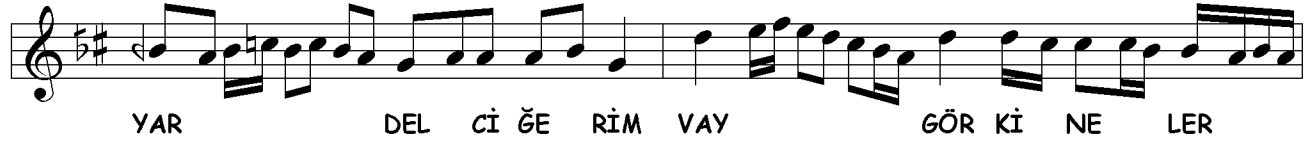
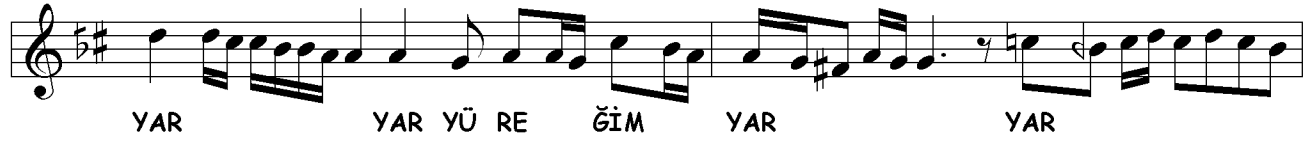
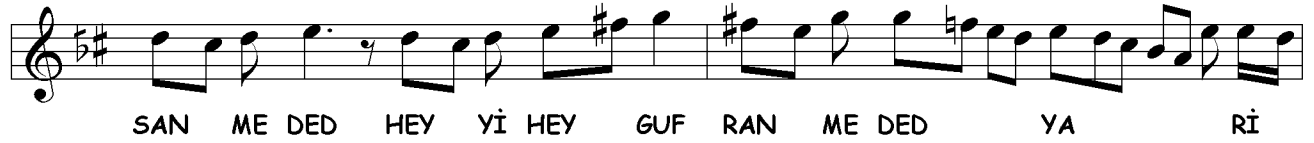
ZA Nİ DEM Kİ RU HAŞ Dİ DEM ŞU Rİ

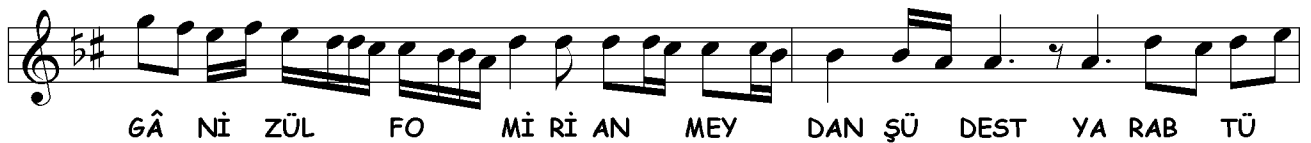
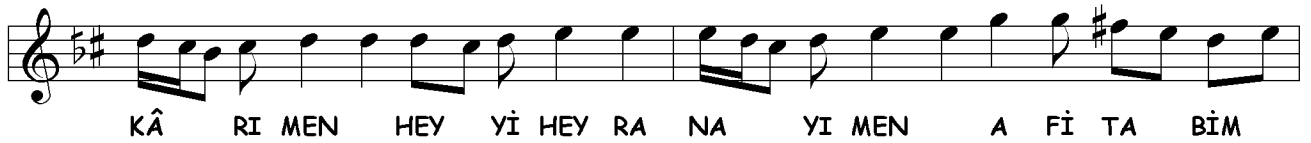
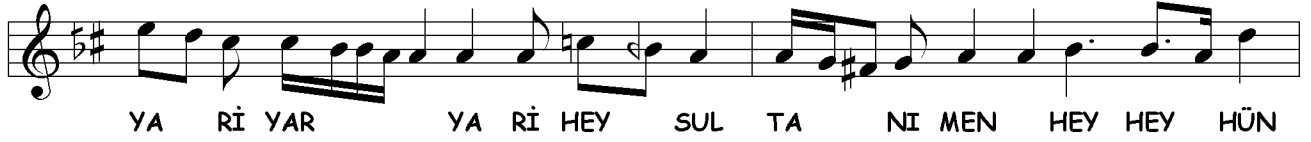


DE VÜ HAY RA NEM HEY Yİ YA Rİ HEY SUL



TA NI MEN VAY ( Saz ) YA Rİ YAR HEY Yİ HEY İH







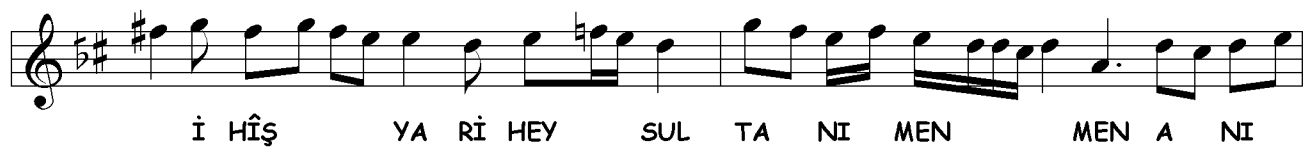
ME RA SA Zİ ME DİH YA Rİ YAR



YA Rİ YAR CA NI CA NI MEN ( Saz ) MEN DER



TŪ HE Mİ Gİ Rİ ZE ME Zİ FIT NE



İ HİŞ YA Rİ HEY SUL TA NI MEN MEN A NI



TŪ EM ME RA BE MEN BA Zİ ME



DİH YA Rİ YAR YA Rİ YAR CA NI CA NI



MEN



## Evfer

DA DEN DEM E ZEL SEC

DE BE Rİ RÛ Yİ SA NEM

RA BER BA Mİ FE LEK BÛR

DEM E ZAN RÛ Yİ A LEM

RA HEY SUL TA NI MEN


MEN HEY HÛN KÂ RI MEN

AH HEY RA NA YI MEN

AH HEY MAK BU Lİ MEN

AH MU CİZ Bİ NÛ MA EZ

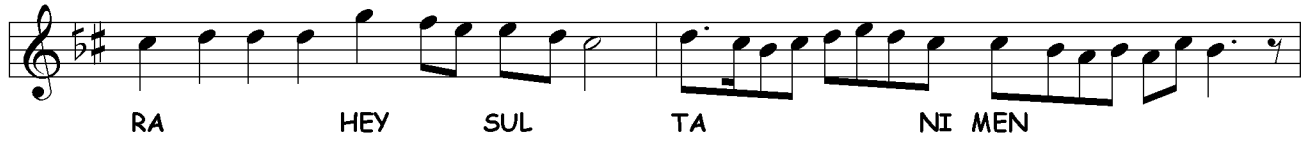
LE Bİ LÂ LET ÇÛ ME Sİ



HA TA ZİN DE KÜ Nİ MÜR



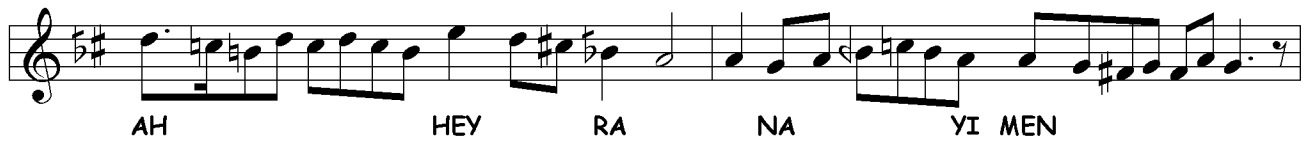
DE İ SAD SA LE İ GAM



RA HEY SUL TA Nİ MEN



MEN HEY HÜN KÂ RI MEN

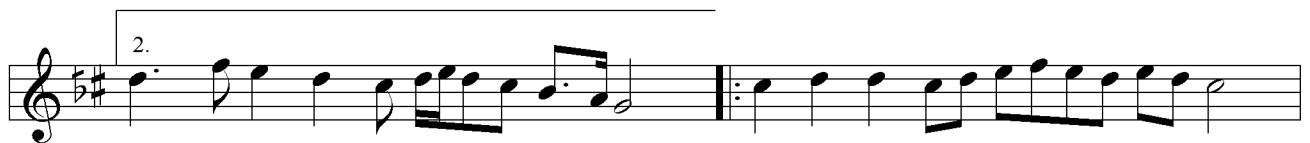
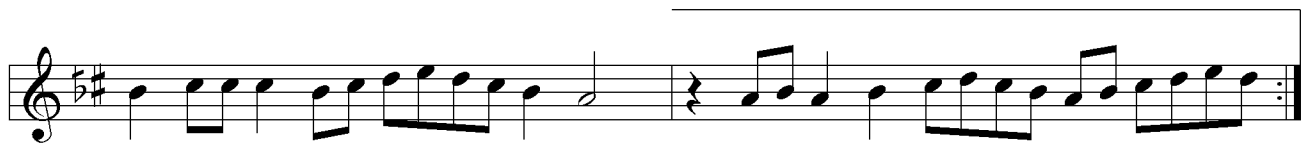



AH HEY RA NA YI MEN



AH HEY MAK BU Lİ MEN





## Devr-i Kebîr



A Şİ KAN DER KÛ Yİ CA NAN  
 ES SA LÂ EY A Şİ KAN DER



EŞ SA LÂ BE Lİ YA Rİ MEN  
 KÜ Yİ DOST BE Lİ YA Rİ MEN



SÛ Yİ AN HUR Şİ Dİ TA BAN  
 ES SA LÂ CAN ES SA LÂ CAN



ES SA LÂ BE Lİ YA Rİ MEN  
 ES SA LÂ BE Lİ YA Rİ MEN



ŞEM Sİ TEB Rİ Zİ Zİ BA LÂ



Yİ FE LEK BE Lİ YA Rİ MEN



HER ZE MA Nİ Mİ KE ŞED HAN ES SA LÂ









EY Kİ HE ZAR A FERİN  
HER Kİ BU GÜN VE LE DE

BU Nİ CE SUL TAN O LUR  
İ NA NU BEN YÜZ SÜ RE



KU LI O LAN Kİ Şİ LER CA NİM HUS RE VÜ HA  
YOK SUL İ SE BAY O LUR CA NİM BAY İ SE SUL



KAN O LUR YAR HUS RE VÜ HA KAN O LUR (Saz )  
TAN O LUR YAR BAY İ SE SUL TAN O LUR



EY



SUB Hİ SE A DET Zİ CE Bİ Nİ TÜ HÜ VEY DA AN



HÜS Nİ Çİ HÜS NES TÜ TE KAD DES VE TE A LÂ EZ



CÂ Yİ Kİ İS MEST BE KÜL Lİ HE ME İS MEST AN CA Yİ Kİ CA



NES TÜ NE İS MÜ NE MÜ SEM MA YA Rİ MEN YAR ( Saz )



AH YA Rİ MEN YAR AH YA Rİ MEN YAR ( Saz ) AH YA Rİ MEN



YAR AH YA Rİ MEN YA Rİ ME RA DOST YA Rİ MEN VAY



ÇÜN BEN DE NE İ Nİ DA Yİ ŞA Hİ Mİ ZEN YAR Tİ



Rİ NA ZA RAN ÇÜ NAN Kİ HA Hİ Mİ ZEN YAR ÇÜN VAY ÇÜN



EZ HO DU GAY Rİ HOD MÜ SEL LEM GEŞ TÎ YAR BÎ



HOD BÎ Nİ ŞİN KÛ Sİ İ LÂ HÎ MÎ ZEN YAR ( Saz ) MEN



BA TÛ ÇÜ NA NE MEY Nİ GÂ RÎ HU TE Nİ ( Saz ) KEN



DER GA LA TAM Kİ MEN TÛ EM YA TÛ ME Nİ ( Saz ) NÎ



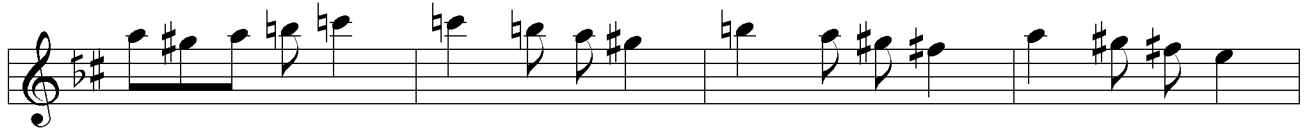
MEN ME NE MÛ NÎ TÛ TÛ YÎ NÎ TÛ ME Nİ YA Rİ YA Rİ



YAR NÎ MEN ME NE MÛ NÎ TÛ TÛ YÎ NÎ TÛ ME Nİ



YAR ( Saz ) HEM MEN ME NE MÛ HEM TÛ TÛ YÎ HEM TÛ ME Nİ





LÂ YE E NET TA İ BÜ MİM MA SE LE FA YAR HEL



YUK BE LÜ OZ RÜ A ŞI KİN KAD TE LE FA YA Rİ YA Rİ



YAR MEV LÂ YE E NET TA İ BÜ MİM MA SE LE FA YAR HEL



YUK BE LÜ OZ RÜ A ŞI KİN KAD TE LE FA YAR İN KÂ NE NE DA



ME TÎ SU DU DEN VE CE FA YA Rİ YAR MEV LÂ YE A FAL



LA HÜ A FAL LA HÜ A FA LÂ YE A FAL LA HÜ A FAL LA HÜ A FA



YAR



KÜ CAS Tİ MUT RI Bİ DİL TA Zİ NA RE HA Yİ SA LÂ  
ÇÜ A Fİ TA Bİ CE MA LET BE RA MED EZ MEŞ Rİ RİK



DE RÜF KE NED DE Mİ O DER HE ZA Rİ SER SEV DA  
Zİ ZER RE ZER RE Şİ Nİ DEM Kİ Nİ' ME MEV LÂ NA



DE RÜF KE NED DE Mİ O DEM HE ZA Rİ SER SEV DA (Saz) SEV DA  
Zİ ZER RE ZER RE Şİ Nİ DEM Kİ Nİ' ME MEV LÂ NA LÂ NA

# DÖRDÜNCÜ SELÂM

Evfer

SUL TA NI ME Nİ

SUL TA NI ME Nİ A

MAN EN DER Dİ LÜ CAN

CAN İ MA NI ME Nİ

AH DER Bİ DE Mİ

MEN ZİN DE ŞE VEM A

MAN YEK CAN Çİ ŞE VED

VED SAD CA NI ME Nİ

AH İ MA NI ME Nİ

# SON PEŞREV

(Zer Mahbub)

Düyek



The image displays a musical score for the piece "SON PEŞREV" (Zer Mahbub) in the "Düyek" style. The score is written in a single system with 12 staves of music. The key signature is one sharp (F#), and the time signature is 5/8. The notation includes various rhythmic values such as eighth and sixteenth notes, rests, and accidentals. The piece concludes with a double bar line and a final cadence symbol.

# SON YÜRÜK

## Yürük Semâî



The image displays a musical score for the piece "SON YÜRÜK" in the "Yürük Semâî" style. The score is written in a single system with 8 staves, all in treble clef. The key signature is one sharp (F#), and the time signature is 5/8. The notation includes a variety of rhythmic patterns, including eighth and sixteenth notes, and rests. The piece concludes with a double bar line on the final staff.