

ACEMBÛSELİK PEŞREV

Devr-i Kebîr

Neyzen Yusuf Paşa

Musical notation for the first part of the piece, Devr-i Kebîr. It consists of five staves of music in 2/4 time, featuring a mix of eighth and sixteenth notes with various accidentals.

§ TESLİM

Musical notation for the second part of the piece, TESLİM. It consists of two staves of music. The second staff is divided into four measures labeled "2.Haneyeye", "3.Haneyeye", "4.Haneyeye", and "KARAR".

İkinci Hane

Musical notation for the third part of the piece, İkinci Hane. It consists of five staves of music, ending with a double bar line and a section symbol (§).

Üçüncü Hane



Musical notation for Üçüncü Hane, consisting of five staves. The first staff begins with a treble clef and a 4/4 time signature. The melody features eighth and sixteenth notes, with a flat (b) above the first staff. The second staff continues the melody with a repeat sign. The third staff includes a triplet of eighth notes marked with a bracket and the number 3. The fourth staff ends with a double bar line and a repeat sign. The fifth staff concludes the piece with a double bar line and a repeat sign.

Dördüncü Hane



Musical notation for Dördüncü Hane, consisting of five staves. The first staff begins with a treble clef and a 4/4 time signature. The melody is composed of eighth and sixteenth notes, with a sharp (#) above the first staff. The second staff continues the melody with a repeat sign. The third staff includes a triplet of eighth notes marked with a bracket and the number 3. The fourth staff ends with a double bar line and a repeat sign. The fifth staff concludes the piece with a double bar line and a repeat sign.

ACEMBÜSELİK MEVLEVÎ ÂYİN-İ ŞERÎF'İ

BİRİNCİ SELÂM

Devr-i Revân

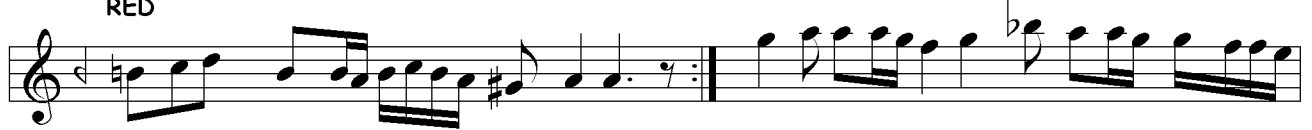
Abdülbâkî Nâsır Dede



AN KES Kİ TÛ RA DA REDEZ İ Şİ ŞİKEM DA
VAN KES Kİ TÛ RA Bİ NEDEY MA Hİ ÇİGAM DA



RED YAR YAR YA Rİ HEY SUL
RED



TA NI MEN DOST BES A Şİ KI A ŞÛF



TE A SÛ DE VÛ HOŞ HUF TE YAR



YAR YA Rİ HEY SUL TA NI MEN DOST



DER SA YA İ AN ZÛL Fİ KÛ HAL KA VÛHAM DA



RED YAR YAR YA Rİ HEY SUL



TA NI MEN DOST YA Rİ YAR YA Rİ YAR



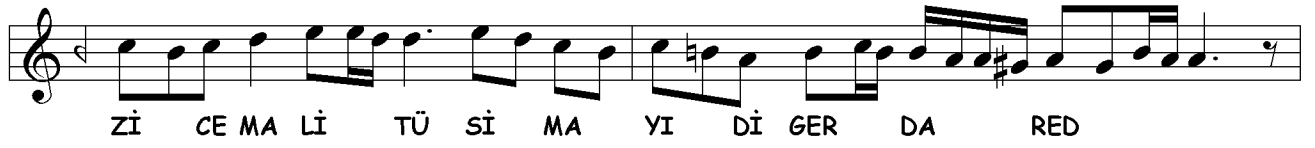
HEY Yİ HEY İH SAN ME DED DOST DOST



HEY Yİ HEY GUF RAN ME DED YAR YAR



YA Rİ HEY SUL TA NI MEN DOST İM RU



YAR DOST DOST YAR

YAR YA Rİ HEY SUL TA NI MEN VAY

İKİNCİ SELÂM

Evfer

AH SUL DER TA MEN NI BI ME NÎ DE MÎ

AH AH SUL MEN TA ZİN NI DE ME NÎ ŞE VEM

AH AH EN YEK DER CAN Dİ Çİ LÜ CAN ŞE VED

CAN VED Î SAD MÂ CÂ NI NI ME NÎ ME NÎ

AH Î MA NI ME NÎ

The image shows six staves of musical notation for the Üçüncü Selâm section. The notation is in a single melodic line, likely for a ney instrument. It begins with a treble clef and a 2/8 time signature. The first five staves contain the main melody, and the sixth staff ends with a double bar line and a 2/8 time signature.

ÜÇÜNCÜ SELÂM

Devr-i Kebîr

The image shows the musical notation for the Devr-i Kebîr section, which includes lyrics. The notation is in a single melodic line, likely for a ney instrument. It begins with a treble clef and a 2/8 time signature. The lyrics are written below the notes.

A ŞI KAN LÂF EZ TE BA REK
SA DI KAN LEB BEY KE VAH YUL

RAB BÜ NEL A LÂ ZE NEND HEY
LA Hİ MA EV HA ZE NEND HEY

LÂ CE REM EZ A ŞI KA NÜ

SA DI KAN EZ SU Zİ DİL HEY





KAD



EŞ RA KA TİD DÜN YA MİN NŪ Rİ HŪ MEY YA NA VEL BED RU A LES



SA KÎ VEL KE' SŪ SŪ REY YA NA ES SAF VE TŪ Î MA NÎ VEL



HAL VE TŪ BUS TÂ NÎ VEL MEŞ Cİ RU NED MÂ NÎ VEL VER DŪ MŪ HAY



YÂ NÂ AH GŪ ZE LİN AŞ KI NA HA LÂ TI NA



YAN DI YŪ REK AŞK HA RA RA TI NA



AND İ ÇE YİM GAY Rİ GŪ ZEL SEV ME YİM AH



TAN RI YE VŪ TAN RI NİN Â YA TI NA





TA



AR PI ZÝ SEV DA YI RU HAP VEL VE LE HAST DER



SÎ NE Zİ BA ZA RI RU HAŞ GUL GU LE HAST EZ



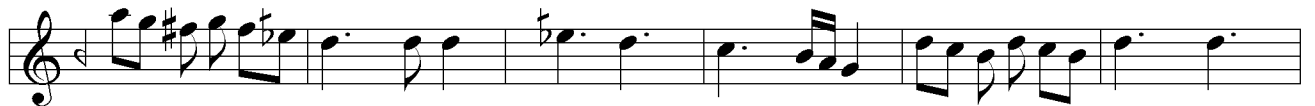
BA DE İ O BER KE Fİ CAN BÜL BÜ LE HAST EZ



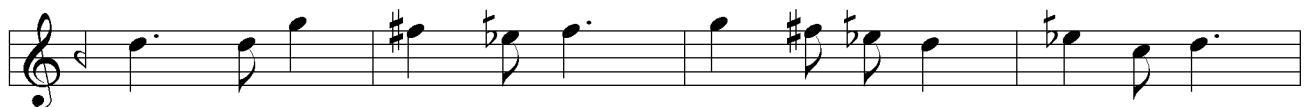
BA DE İ O BER KE Fİ CAN BÜL BÜ LE HAST BER



GER DE Nİ DİL Zİ ZÜL Fİ O SİL Sİ LE HAST



BAZ EZ ÂN KÛ Yİ KAF Â ME DÎ AN KÂ Yİ AŞK



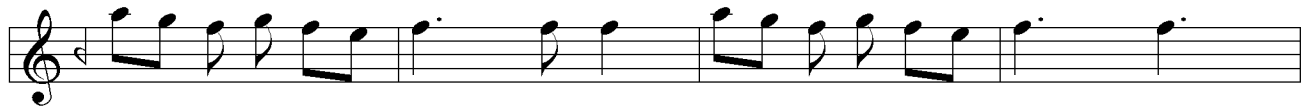
BAZ BE RÂ MED Zİ CAN NÂ RE İ HEY HA Yİ AŞK



AŞK Nİ DA Yİ BÜ LEND KERD BE Â VÂ Zİ PEST



KEY Dİ Lİ BÂ LÂ Nİ GER DER KA Dİ BÂ LÂ Yİ AŞK



CA ME Sİ YEH KERD KÜ FÜR NU Rİ MU HAM MED RE SİD



TAB LI BE KA KU FU TEND MİL Kİ MU HAL LED RE SİD



EZ PE Yİ NÂ MAH RE MAN KU FUL ZE DEM BER Dİ HAN



HÎZ Bİ GÛ MUT RI BA İŞ RE Tİ SER MED RE SİD

DÖRDÜNCÜ SELÂM

Evfer



AH SUL DER TA MEN NI Bİ ME Nİ DE Mİ



AH AH SUL MEN TA ZİN NI DE ME Nİ ŞE VEM



AH AH EN YEK DER CAN Dİ Şİ LÛ CAN ŞE VED



CAN VED İ SAD MA CA NI NI ME Nİ ME Nİ



AH İ MA NI ME Nİ

SON PEŞREV

Düyek

Musical notation for SON PEŞREV in Düyek style. The piece is written in 2/4 time and D major. It consists of five staves of music. The notation includes various rhythmic values such as eighth and sixteenth notes, and rests. The piece concludes with a double bar line and a final cadence.

SON YÜRÜK

Yürük Semâî

Musical notation for SON YÜRÜK in Yürük Semâî style. The piece is written in 2/4 time and D major. It consists of six staves of music. The notation includes various rhythmic values such as eighth and sixteenth notes, and rests. The piece concludes with a double bar line and a final cadence.