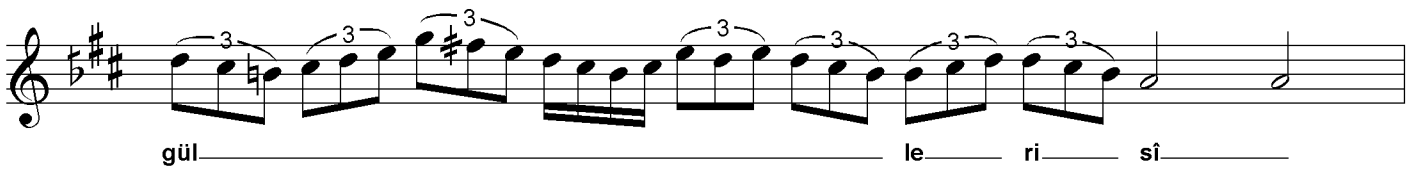
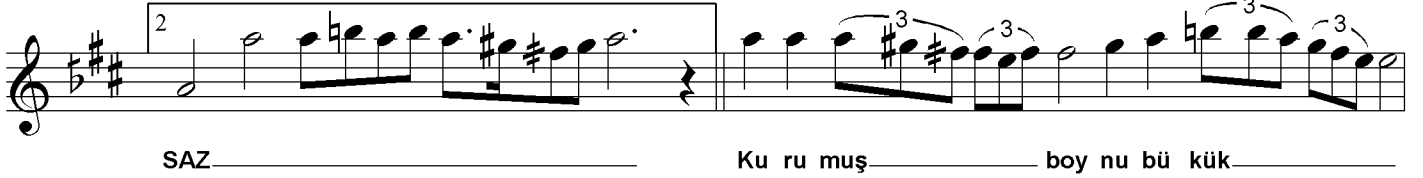
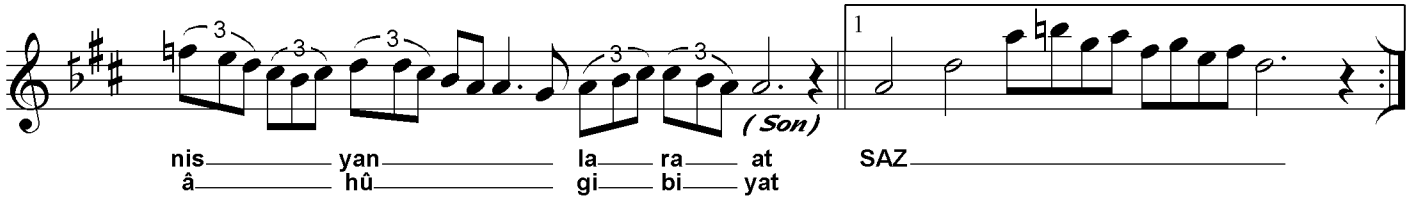
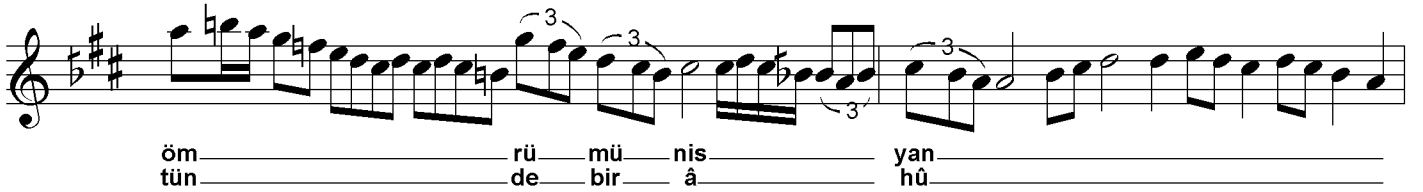
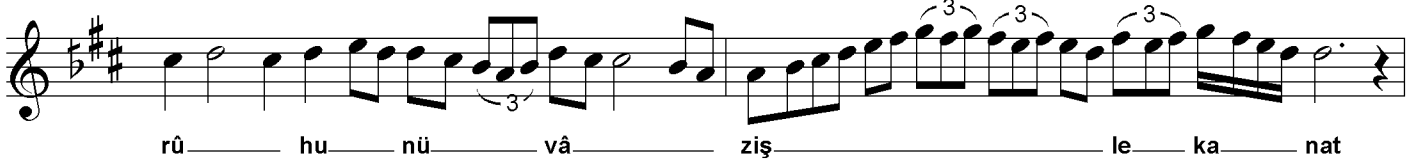
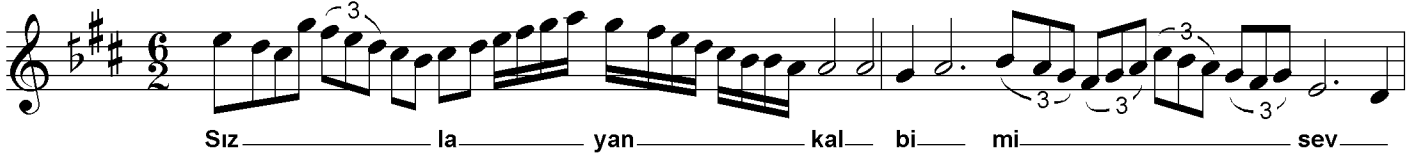


Sızlayan kalbimi sev rûhu nüvâzişle kanat

Beste: Selâhaddin Pınar
Güfte: M. Nâfiz İrmak

Sengin Semâi ♩ = 42



*Sızlayan kalbimi sev, rûhu nüvâzişle kanat
Kara sevdaya düşür ömrümü isyanlara at
Kurumuş boynu bükük gülleri sinende yaşat
Gel, biraz kalbimin üstünde bir âhu gibi yat*