

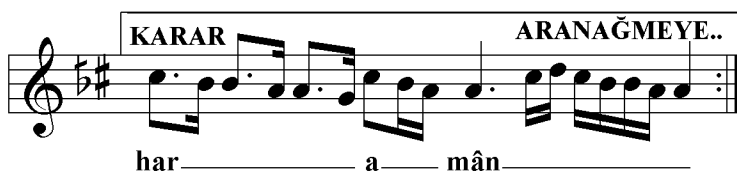
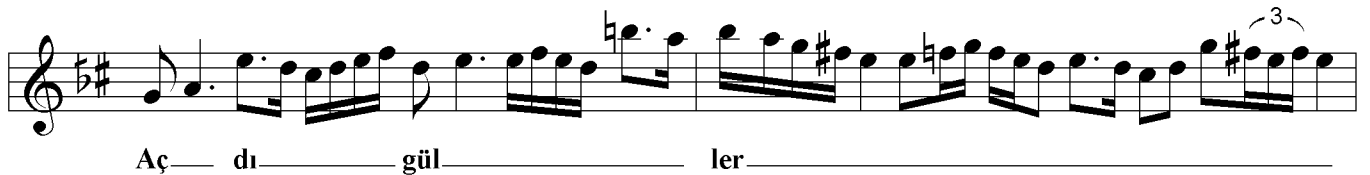
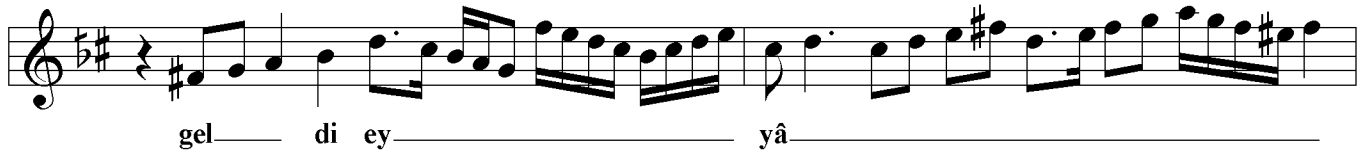
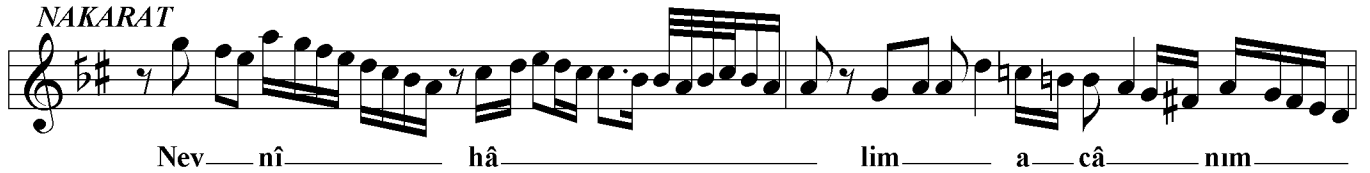
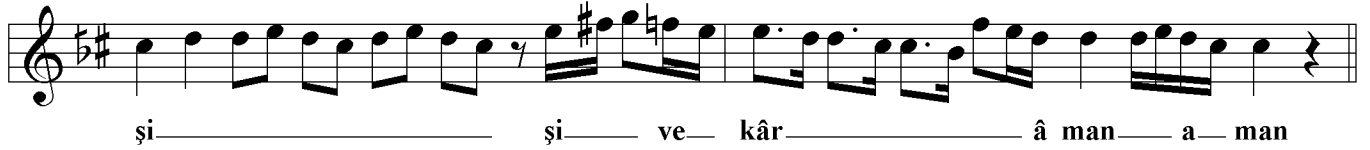
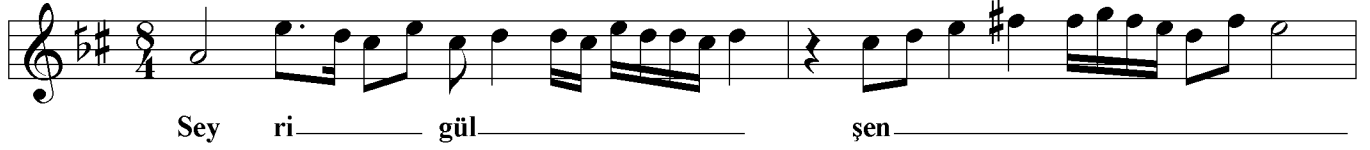
HİCAZ ŞARKI

Seyr-i gülşen idelim ey şivekâr

Câhit Gözkân Külliyyâtı
Kânûnî Mehmet Bey el
yazması "KÜTÜK" den;

Dede Efendi

Ağır Düyek



Seyr-i gülşen idelim ey şivekâr
Nev nihâlim geldi eyyâm-ı bahar
Açdı güller bülbül eyler âh u zâr
Nev nihâlim geldi eyyâm-ı bahar

The image displays a musical score for a piece in G major, consisting of five staves of music. The first staff begins with a treble clef, a key signature of one sharp (F#), and a common time signature. The music is written in a single melodic line. The second staff continues the melody, featuring a triplet of eighth notes. The third staff shows a more complex rhythmic pattern with eighth and sixteenth notes. The fourth and fifth staves are marked with a '1' and '2' respectively, indicating first and second endings. Both ending staves feature multiple triplet markings over eighth notes. The piece concludes with a double bar line and repeat dots.

Notist: Bilâl Kavçakar
Tashih: Cemil Altınbilek

Seyr-i gülşen : Gül bahçesi seyretmek
Şivekâr : Nazlı, edâlı işveli
Âh u zâr : Âh edip inleme
Nev nihâl : Tâze fidan
Eyyâm-ı bahar : Bahar günleri